



DEDICATED TO THE NATION'S DEFENSE SINCE 1920

Lake Michigan Post

Of The Society of American Military Engineers



22 February 2007

Our Next Post Meeting is . . .

11:30 AM Thursday, March 8, 2007

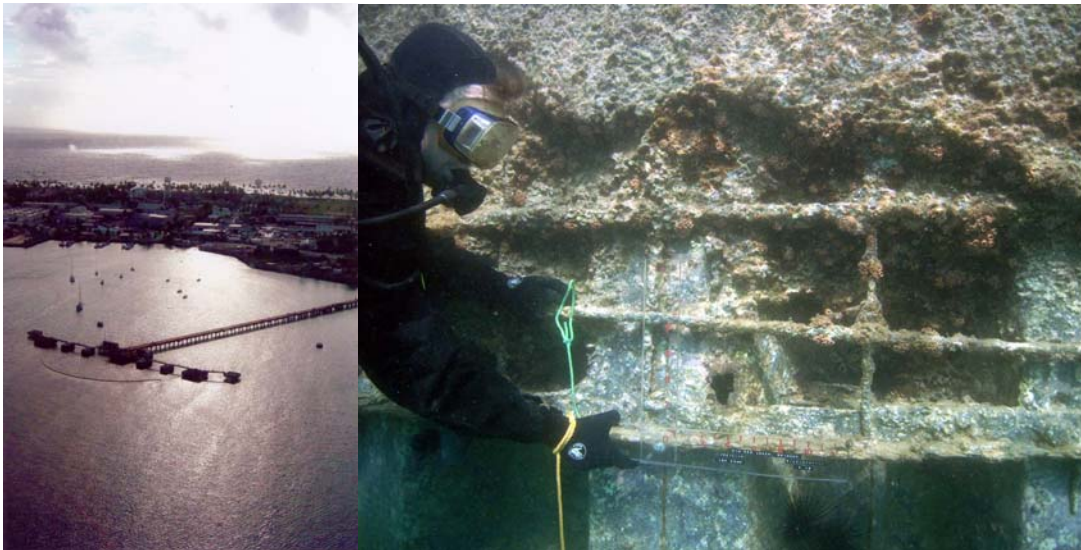
at the

Highland Park Country Club

1201 Park Ave W, Highland Park, IL 60035

Luncheon Cost: \$10.00 (Public Members); \$15.00 (Members); \$20.00 (Non Members)

Come join us at the Highland Park Country Club (HPCC), which is a first-class conference facility where they serve an outstanding all-you-can-eat buffet lunch with several choices on everything from salads to entrees to desserts. Their combination of quality and variety makes this luncheon an enjoyable eating experience and an excellent value. Following lunch we will have a presentation regarding the interesting subject "**Underwater Inspection and Construction at Military Facilities**". Our speaker **Thomas Collins** of Collins Engineers in Chicago is a veteran of underwater inspection and construction and his firm has completed several interesting underwater projects all over the US and internationally



Please join the Lake Michigan Post on Thursday, March 8, 2007, for this interesting presentation.

Meet with your fellow SAME members and develop networking opportunities before, during and after our post meeting.

RSVP by emailing: james.shefchik@navy.mil, Subject: SAME March luncheon RSVP.

Questions: contact LT James Shefchik Phone: (847) 688-6297; or E-mail rrajaram@techknow-eng.com.

Special Thanks to the Lake Michigan Post Sustaining Members:

Aldridge Electric - AMEC Earth & Environmental, Inc. - Ameresco - Blinderman Construction Company Inc. - Charpie Construction Co. Inc.
Clark Construction Group LLC - Dwyer Kitchens - Earth Tech Inc. - Esche & Lee Inc. - FGM Architects Engineers Inc.
Graef Anhalt Schloemer & Associates Inc. - James McHugh Construction - Joseph J. Henderson & Son Inc. - Kowalenko & Billotti
M + W Zander - Mastership Construction Co. Inc - Mitig Inc. - Rolf Jensen & Associates Inc. - SG Construction - SI Group Inc.
Stanley Consultants Inc. - Techknow Engineering LLC - Teng & Associates Inc. - The Saturn Partners Inc. - URS Corporation - Versar Inc.
WESTON Solutions Inc. - Wisconsin Procurement Institute



DEDICATED TO THE NATION'S DEFENSE SINCE 1920

Lake Michigan Post

Of The Society of American Military Engineers



DIRECTIONS:

From Naval Station Great Lakes:

Take Buckley to US-41. Turn left (south) on Skokie Hwy/Route 41 and continue for 9 miles. Turn Left on Park Ave. W. The Highland Park Country Club is on the left (north) side of the street about .25 miles east of Route 41.

From Downtown Chicago:

Follow signs to Tollway I-94 West (north toward Milwaukee). When I-94 forks, continue north to Route 41 for 3.8 miles. Turn Right on Park Ave. W. The Highland Park Country Club is on the left (north) side of the street about .25 miles east of Route 41.

From Chicago O'Hare International Airport:

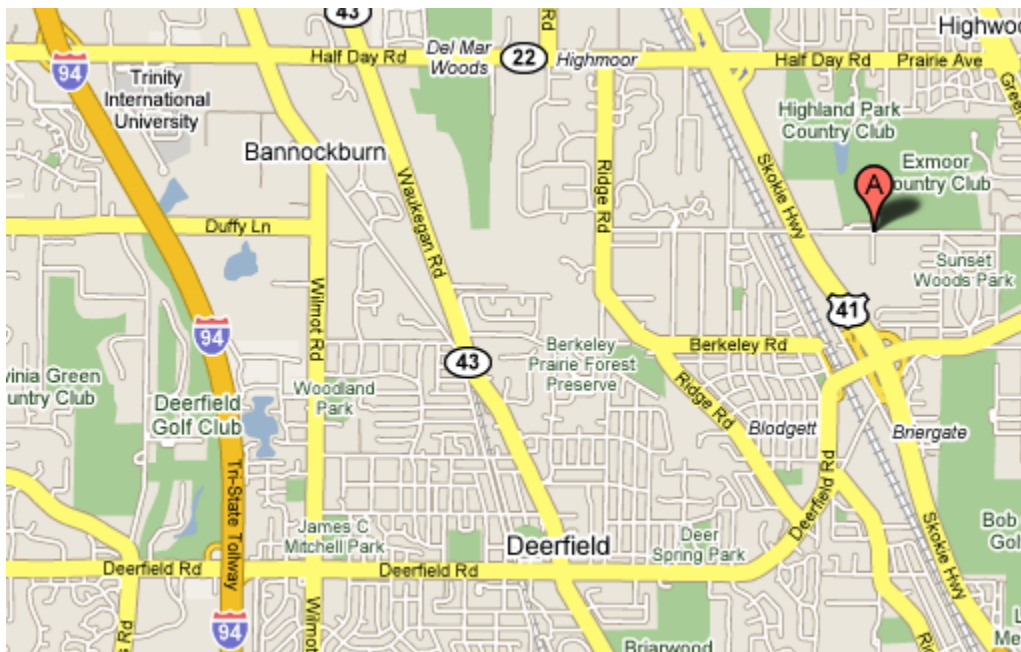
Follow signs to Tollway I-294 West and I-94 North to Milwaukee. Follow I-94 North towards Milwaukee for 13.5 miles. Exit at Deerfield Rd, heading east. At route 41 turn use the North ramp onto Skokie Valley Rd/Route 41. At the first stop light, turn Right on Park Ave. W. The Highland Park Country Club is on the left (north) side of the street about .25 miles east of Route 41.

From Midway Airport:

When exiting the airport, take Route 50 North to the junction of Route 55, about 3 miles. Take Route 55 Southwest to Tollway I-294, about 12 miles. Take I-294 and I-94 West north to Milwaukee. Proceed north. Exit at Deerfield Rd, heading east. At route 41 turn use the North ramp onto Skokie Valley Rd/Route 41. At the first stop light, turn Right on Park Ave. W. The Highland Park Country Club is on the left (north) side of the street about .25 miles east of Route 41.

From Milwaukee:

Take I-94 East south toward Chicago. Just after you cross the Wisconsin/Illinois border, exit to the left on Route 41 South to Waukegan. Proceed south on Route 41 for 22.5 miles. Turn Right on Park Ave. W. The Highland Park Country Club is on the left (north) side of the street about .25 miles east of Route 41.



Special Thanks to the Lake Michigan Post Sustaining Members:

Aldridge Electric - AMEC Earth & Environmental, Inc. - Ameresco - Blinderman Construction Company Inc. - Charpie Construction Co. Inc.
Clark Construction Group LLC - Dwyer Kitchens - Earth Tech Inc. - Esche & Lee Inc. - FGM Architects Engineers Inc.
Graef Anhalt Schloemer & Associates Inc. - James McHugh Construction - Joseph J. Henderson & Son Inc. - Kowalenko & Billotti
M + W Zander - Mastership Construction Co. Inc - Mitig Inc. - Rolf Jensen & Associates Inc. - SG Construction - SI Group Inc.
Stanley Consultants Inc. - Techknow Engineering LLC - Teng & Associates Inc. - The Saturn Partners Inc. - URS Corporation - Versar Inc.
WESTON Solutions Inc. - Wisconsin Procurement Institute