



# Lake Michigan Post

## Society of American Military Engineers

Vol. 1 • No. 7 • Monthly • December 2006

Reminder: 2007 Meetings - 2nd Thursday of the Month - Highland Park Country Club-1201 Park Avenue West-Highland Park

### Annual Joint Chicago and Lake Michigan Post Luncheon

On November 16th, at the Joint S.A.M.E. Chicago and Lake Michigan Posts luncheon, Roy Deda, Deputy for Project Management, U.S. Army Corps of Engineers, USACE Chicago District and Capt. Bob Gibbs, C.O. of NAVFAC Midwest detailed upcoming projects to more than 50 attendees

#### Contracting Opportunities



USACE  
Chicago  
District



NAVFAC  
Midwest

#### USACE - Chicago District

Roy Deda in his overview delineated the USACE Chicago District Boundaries and illustrated the Chicago Area 7 Harbors, loc, 10 miles of structures, 31 miles of channels, and 135 miles of coastline. He described the capabilities of the Chicago District in flood and storm damage reduction, ecosystem restoration, navigational infrastructure, and invasive species management

Of the planned RFPs, he foresaw unrestricted as well as small business set aside projects. He estimated that the District will award 20 contracts through September of 2007 totaling \$50 to \$75 million.

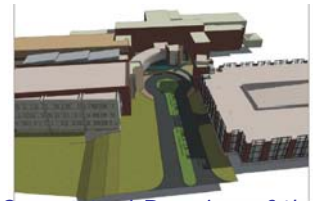
Indiana Harbor and Canal CDF



#### NAVFAC Midwest

In his briefing Capt. Gibbs described the integration of the Horizontal and Vertical roles and the Business Lines within the NAVFAC Midwest Organization. He outlined the Supported Commands of Naval Station Great Lakes, Crane, Mid South, and Central.

The contracting vehicles include the Tri-Sate MACC, Service and IDIQ Contracts, Architect Engineer Contracts, and Environmental



Conceptual Drawing of the Federal Health Care Facility

Capt. Gibbs projected about a dozen contracts from 2007 to 2012 with approximate values of \$2 to \$14 million each, the Federal Health Care Facility among them.

January 11<sup>th</sup>- 11:30 am Luncheon  
Installation of New Officers and Directors

### Election - Officers and Elected Directors

Members are asked to cast votes by one (and only one) of three possible means: (1) With your RSVP to LT James Shefchik for the Holiday Luncheon December 14th, 11:30 am at the Harrison House, [james.shefchik@navy.mil](mailto:james.shefchik@navy.mil) (2) by e-mail to CDR Tony Edmonds, [antonio.edmonds@navy.mil](mailto:antonio.edmonds@navy.mil), or (3) in person at the Holiday Luncheon.

#### Slate of Candidates 2007 SAME Lake Michigan Post Officers and Elected Directors

Position	Slated Candidate	Elected Directors
President	Captain Bob Gibbs	Al Behring
Vice President	John Ochoa	Ken Endress
Treasurer	Steve Blinderman	Al Esche
Secretary	LT James Shefchik	CDR Beth Hartmann
		Jeff Markey

Visit Our  
Website for  
Updates

[Http://www.same.lakemichigan.org](http://www.same.lakemichigan.org)

Mark Your Calendars - 2007 Meetings - 2nd Thursday of the Month

# Holiday Gift Exchange and Toys for Tots

**Dec 14th**  
**11:30 am**  
**Harrison**  
**House**

Please **RSVP to LT James Shefchik by December 12th** if you plan to attend our Holiday Luncheon, Thursday December 14th, 11:30 am at the Harrison House in Lake Bluff. The Harrison House is closing at the end of the month, so this will be our last chance to enjoy their superb venue and cuisine. We will have a no-holds-barred **Gift Exchange** and everyone who wants to participate is asked to bring a wrapped present of any value / desirability...along with a sense of humor and spirit of giving...which does not necessarily involve receiving!

*CDR Tony Edmonds, President, S.A.M.E. Lake Michigan Post*



Please purchase and donate **unwrapped** toys and bring them to the December 14, SAME Lake Michigan Post Holiday luncheon at the Harrison House beginning 11:30 am. These will be picked by two Marines who will join us for the luncheon.

The Marine Corp Reserve is a primary collection point for the Toys for Tots gift giving campaign. Last year, the Marines distributed toys to over 40,000 under-resourced children though local County agencies and local places of worship.

## Join These Hardworking Committees

**N**  
**e**  
**w**  
**Y**  
**e**  
**a**  
**r**  
**'**  
**s**  
**R**  
**e**  
**s**  
**o**  
**l**  
**u**  
**t**  
**i**  
**o**  
**n**

<p><b>MEMBERSHIP</b></p> <p><b>Purpose:</b> Maintaining and recognizing LMP individual and sustaining members</p> <p><b>Chair:</b> Alan Esche 847.394.1550</p>	<p><b>OUTREACH/SCHOLARSHIPS - Young People Career Development</b></p> <p><b>Purpose:</b> Provide young people learning opportunities to support engineering/scientific careers.</p> <p><b>Chair:</b> Ken Endress 847.688.4211x112</p>	<p><b>READINESS/ HOMELAND SECURITY</b></p> <p><b>Purpose:</b> Establish and main- tain a viable readiness of LMP members for national defense</p> <p><b>Chair:</b> Anthony Bilotti 847.433.4773</p>
<p><b>COMMUNICATION</b></p> <p><b>Purpose:</b> Publish monthly and quarterly newsletters, facilitate communication and outreach for LMP Committees and Post.</p> <p><b>Chair:</b> Emma Kowalenko 847.433.4773</p>		<p><b>WEBMASTER</b></p> <p><b>Purpose:</b> Maintain electronic systems allowing LMP-SAME to communicate with the world</p> <p><b>Chair:</b> Dean Geers 847.918.4013</p>
<p><b>YELLOW RIBBON</b></p> <p><b>Purpose:</b> Support military personnel and their families</p> <p><b>Chair:</b> Jim Ostrander 847.918.5451</p>		<p><b>GOLF OUTING</b></p> <p><b>Purpose:</b> Organize and execute scholarship golf outing</p> <p><b>Chair:</b> Blayne Kirsch 847.688.5999x145</p>

Interested in submitting an article for our next edition? Contact Emma Kowalenko 847-433-4773 or [ekowalenko@kbconsulting.net](mailto:ekowalenko@kbconsulting.net)

